

Front seat backrest trim protrudes

Topic number LI91.10-P-055704

Version 1

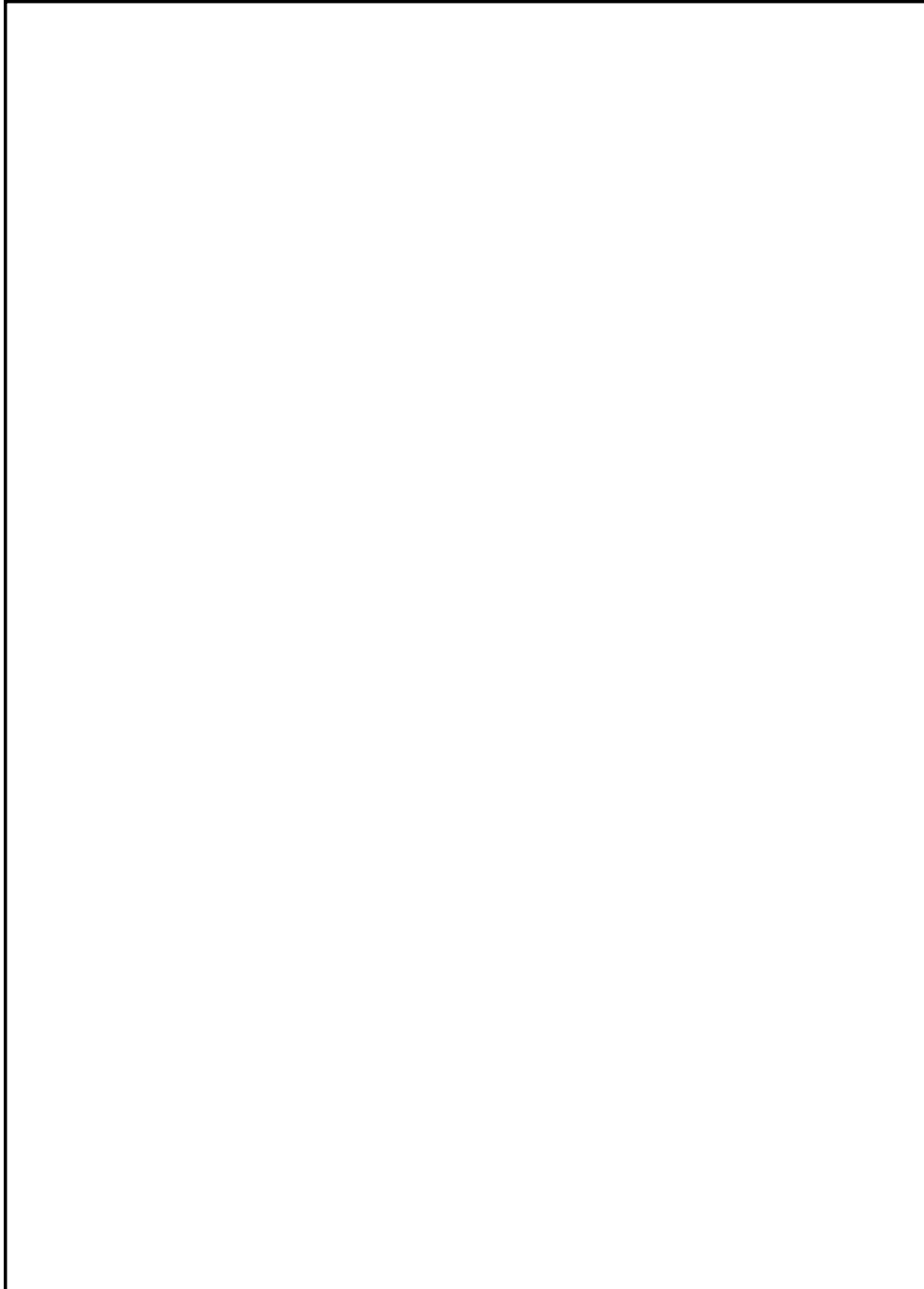
Design group 91.10 Front seats

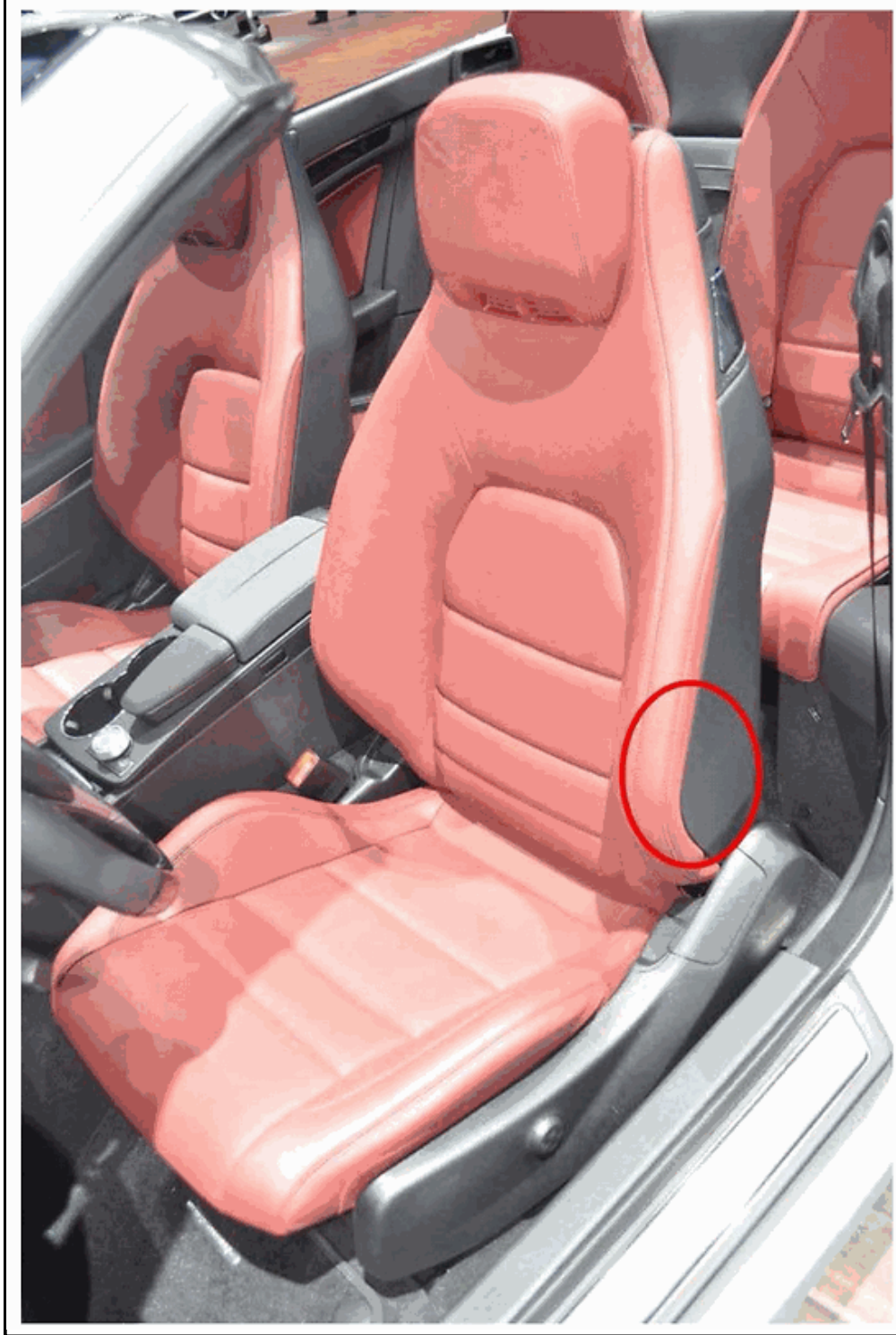
Date 03-05-2013

Validity Model series 207 and 204.3

Reason for change

Complaint:





Gap forming between backrest cover frame and backrest padding in area of side bolster, trim protrudes (for area see Pic0).

File	Designation
Pic0.jpg	Area of gap formation Picture shows OK condition

Attachments

Cause:
Mounting clip loosening under load.

Remedy:

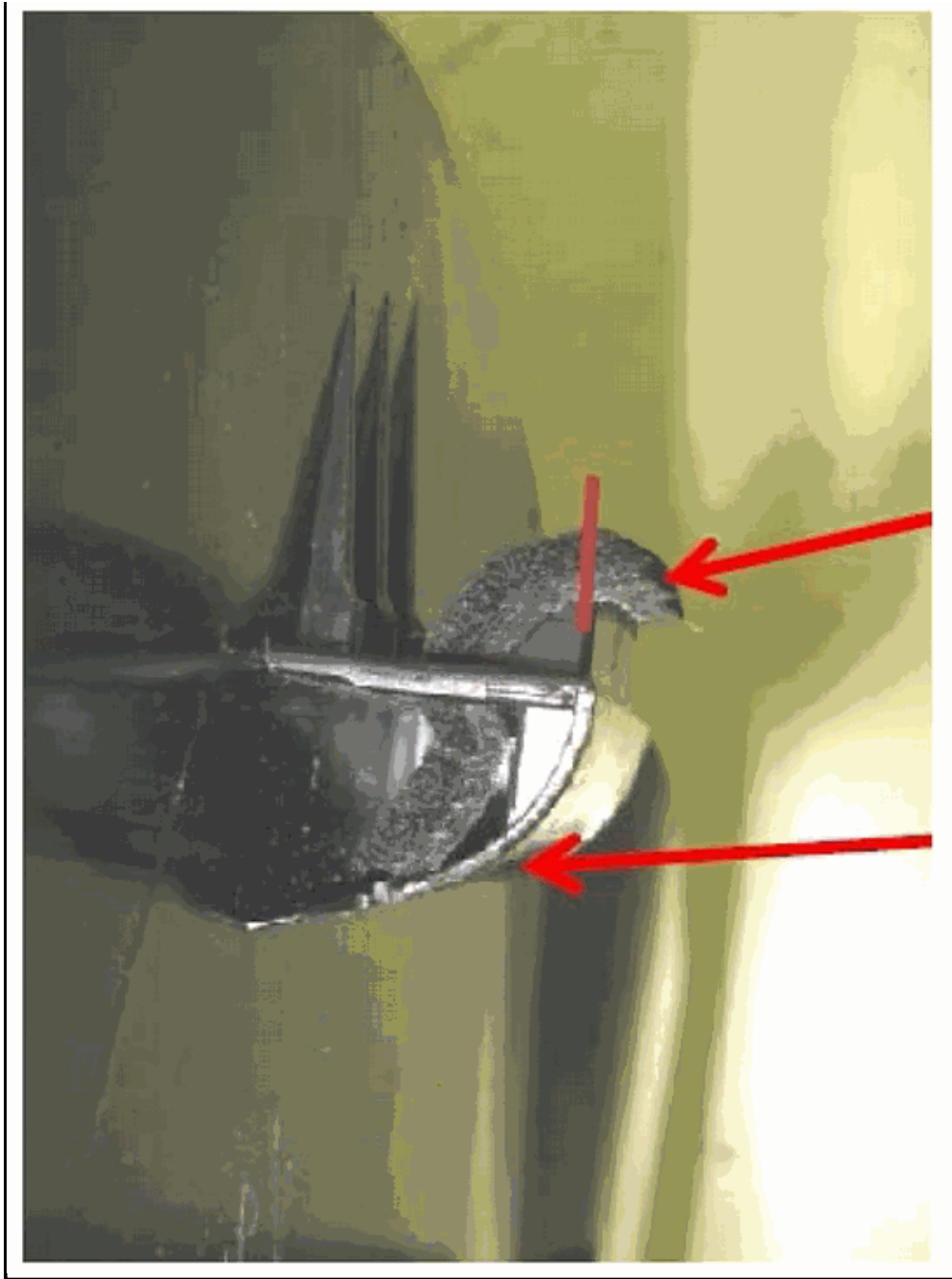


Increase clip forces by gluing in a piece of felt (see Pic1).

To do this, detach seat-back lining as per instructions in WIS document AR91.10-P-1910CW and remove lower mounting bolts of cover frame.

The trim can now be pulled back at the bottom.





Cut felt to size 19mm x 30mm and glue around the catch hook (see Pic2).

File	Designation
Pic1.jpg	Area of clip
Pic2.jpg	Gluing felt

Attachments

Body / Seat / Seat cover / Detaches

Symptoms

Part number	ES1	ES2	Designation	Quantity	Note	EPC	Other make part
A1689830092			Felt	1	25x60x4		X

Parts

Op. no.	Operation text	Time	Damage code	Note
			91A12 38	Left front seat backrest trim loose
			91N12 38	Right front seat backrest trim loose

Work units

Document number	Title	Note	Allocation
ar91.10-p-1910cw	Remove/install seat-back lining on front seat backrest		Remedy

WIS-References

© 2018 ALldata, LLC. All Rights Reserved. (Version 2.0.13872)